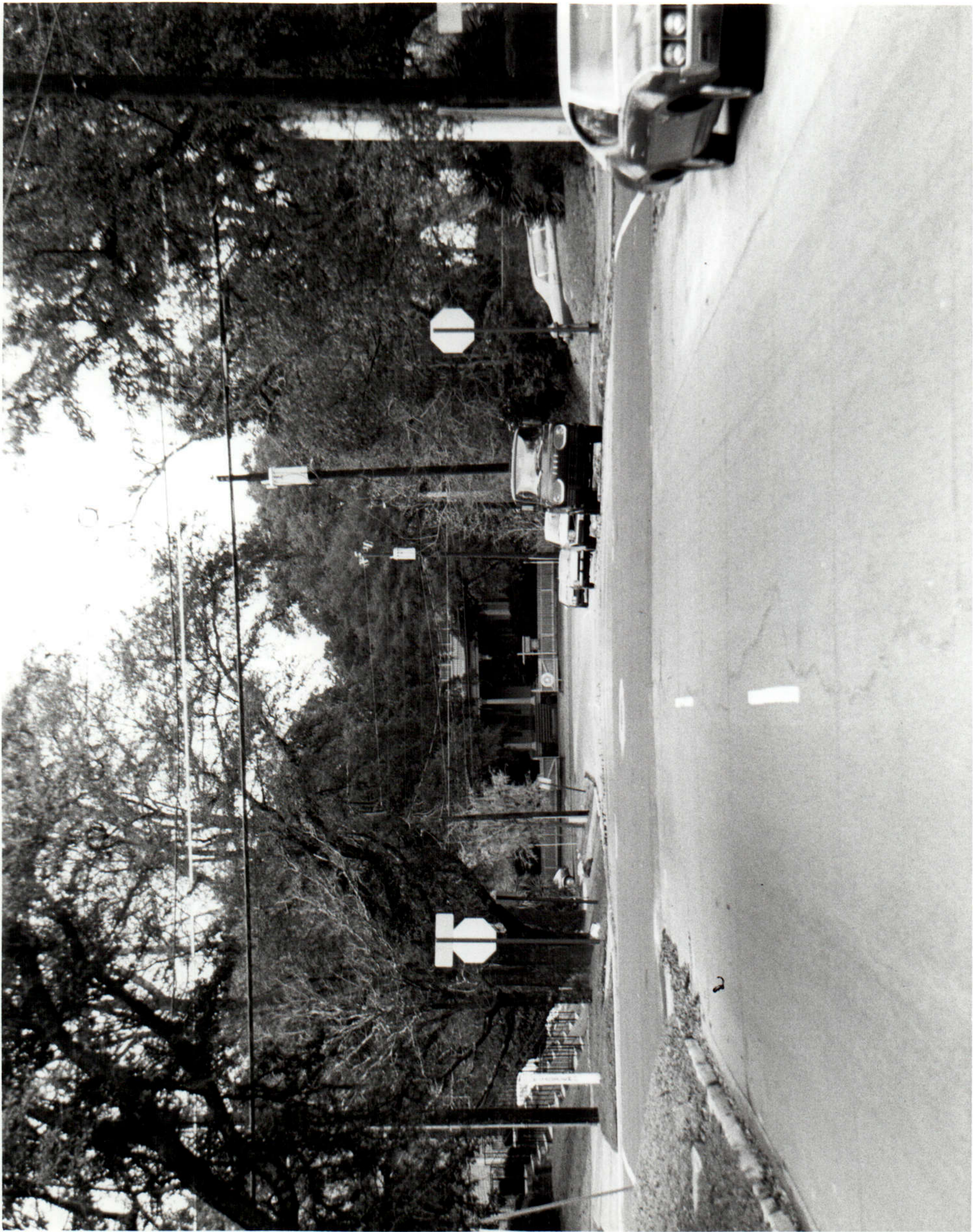




1. Calhoun Street Historic District
2. Tallahassee, Florida
3. Sherry Dougherty
4. 1979
5. Florida Division of Archives, History and  
Records Management
6. Edwin G. Chesley House, North facade  
401 E. Virginia Street
7. Photo No. 2

LE209



1. Calhoun Street Historic District
2. Tallahassee, Florida
3. Dan Deibler
4. 1979
5. Florida Division of Archives, History,  
and Records Management
6. East Virginia Street Looking East to  
the Brokaw-McDougall House
7. Photo No. 3

CE209



- Calhoun Street Historic District  
Tallahassee, Florida  
Sherry Dougherty  
1979  
Florida Division of Archives, History  
and Records Management  
William T. Bloxham House, East facade  
410 N. Calhoun Street  
Photo No. 4

LE209



- Calhoun Street Historic District  
Tallahassee, Florida  
Sherry Dougherty  
1979  
Florida Division of Archives, History and  
Records Management  
Randall-Lewis House, East facade  
424 N. Calhoun Street  
Photo No. 5

CE209





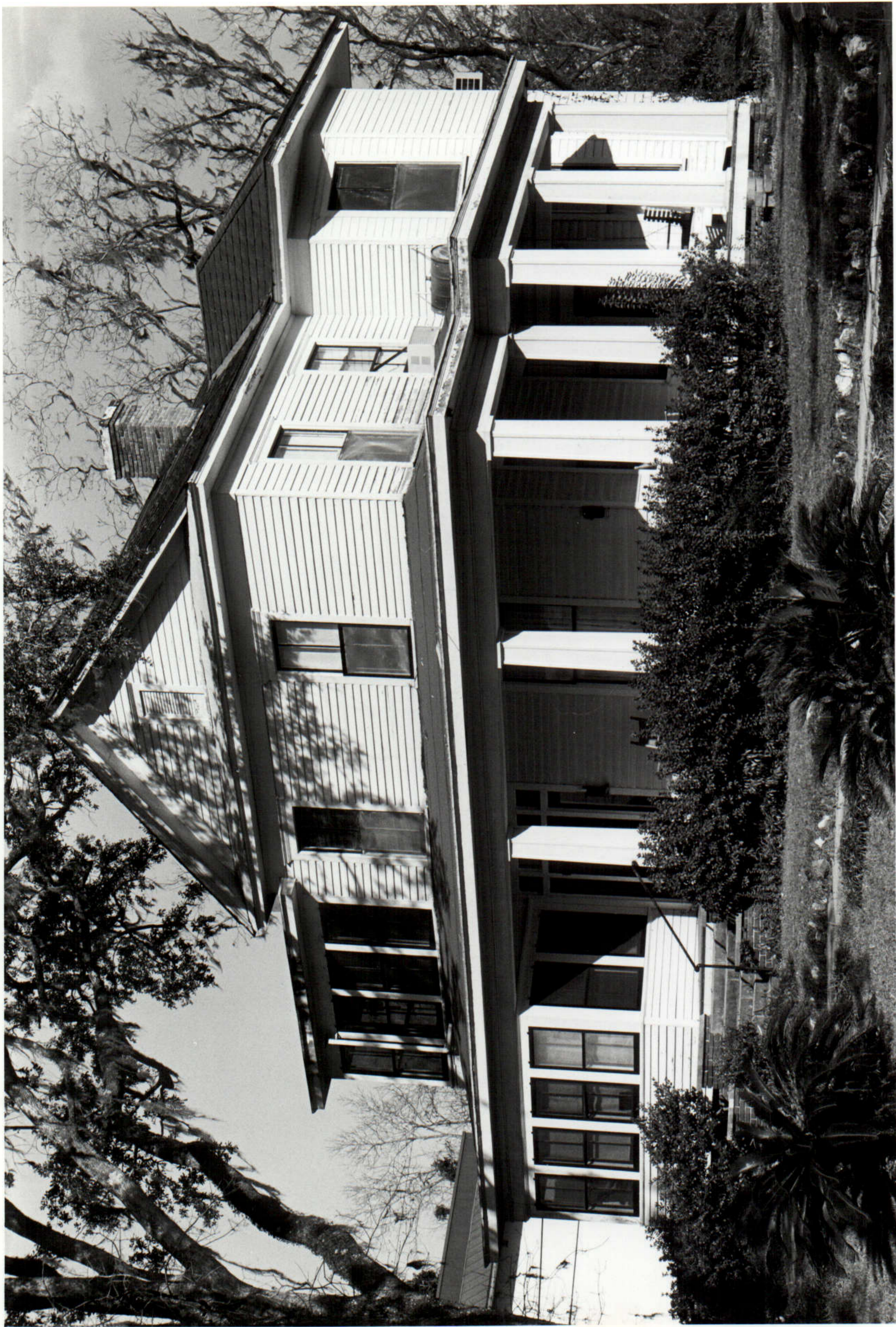
1. Calhoun Street Historic District
2. Tallahassee, Florida
3. Sherry Dougherty
4. 1979
5. Florida Division of Archives, History  
and Records Management
6. Richard A. Shine, East Facade,  
318 N. Calhoun Street
7. Photo No. 6

LE209



- Calhoun Street Historic District  
Tallahassee, Florida  
Sherry Dougherty  
1979  
Florida Division of Archives, History and  
Records Management  
518 N. Calhoun Street, East facade  
Photo No. 7

LE209



- Calhoun Street Historic District  
Tallahassee, Florida  
Sherry Dougherty  
1979  
Florida Division of Archives, History and  
Records Management  
C. L. Mizell House, West and South facades  
525 N. Calhoun Street  
Photo No. 11
- 1.
  - 2.
  - 3.
  - 4.
  - 5.
  - 6.
  - 7.

LE209



- Calhoun Street Historic District  
Tallahassee, Florida  
Sherry Dougherty  
1979  
Florida Division of Archives, History and  
Records Management  
Georgia Bell Dickinson Apartments, North  
and West facades, 301 E. Carolina Street  
Photo No. 12

CE2A





- Calhoun Street Historic District  
Tallahassee, Florida  
Dan Deibler  
1979  
Florida Division of Archives, History and  
Records Management  
Lee Apartments, south facade  
314 E. Virginia Street  
Photo No. 13

CE209



1. Calhoun Street Historic District
2. Tallahassee, Florida
3. Dan Deibler
4. 1979
5. Florida Division of Archives, History and  
Records Management
6. Bradford-Cobb House, West and south facades  
403 N. Calhoun Street
7. Photo No. 14

CE209



- Calhoun Steet Historic District  
Tallahassee, Florida  
Sherry Dougherty  
1979  
Florida Division of Archives, History and  
Records Management  
William H. Markham House, South facade  
317 N. Calhoun Street  
Photo No. 16

LE209



1. Calhoun Street Historic District
2. Tallahassee, Florida
3. Dan Deibler
4. 1979
5. Florida Division of Archives, History and  
Records Management
6. William W. Perkins House, East facade  
310 N. Gadsden Street
7. Photo No. 17

LE 209





1. Calhoun Street Historic District
2. Tallahassee, Florida
3. Sherry Dougherty
4. 1979
5. Florida Division of Archives, History  
and Records Management
6. Phebe Brokaw Quarterman House, West  
Facade, 411 N. Calhoun Street
7. Photo No. 18

LE209



1. Calhoun Street Historic District
2. Tallahassee, Florida
3. Dan Deibler
4. 1979
5. Florida Division of Archives, History,  
and Records Management
6. 410 North Gadsden Street, East Facade
7. Photo No. 19

LE209



- Calhoun Street Historic District  
Tallahassee, Florida  
Dan Deibler  
1979  
Florida Division of Archives, History and  
Records Management  
Emery Csikos House, South facade  
316 E. Virginia Street  
Photo No. 20
- 1.
  - 2.
  - 3.
  - 4.
  - 5.
  - 6.
  - 7.

LE209



- Calhoun Street Historic District  
Tallahassee, Florida  
Sherry Dougherty  
1979  
Florida Division of Archives, History and  
Records Management  
Martha D. Messer House, North facade  
417 E. Virginia Street  
Photo No. 21
- 1.
  - 2.
  - 3.
  - 4.
  - 5.
  - 6.
  - 7.

LE209





- Calhoun Street Historic District  
Tallahassee, Florida  
Sherry Dougherty  
1979  
Florida Division of Archives, History and  
Records Management  
James Perkins House, North facade  
423 E. Virginia Street  
Photo No. 22
- 1.
  - 2.
  - 3.
  - 4.
  - 5.
  - 6.
  - 7.

LE 209



1. Calhoun Street Historic District
2. Tallahassee, Florida
3. Sherry Dougherty
4. 1979
5. Florida Division of Archives, History  
and Records Management
6. Margaret Cotten House, East facade  
406 N. Meridian Rd.
7. Photo No. 23

LE209



Calhoun Street Historic District

1. Tallahassee, Florida

2. Sherry Dougherty

3. 1979

4. Florida Division of Archives, History and  
Records Management

5. James L. Cresap House, North facade

6. 317 E. Virginia Street

7. Photo No. 24

LE209



Calhoun Street Historic District

1. Tallahassee, Florida

2. Sherry Dougherty

3. 1979

4. Florida Division of Archives, History and

5. Records Management

6. Herman Gunter House, South and West facades

7. 516 Miccosukee Road

Photo No. 26

LE209





1. Park Avenue Historic District
2. Tallahassee, Florida
3. Dan Deibler
4. 1978
5. Florida Division of Archives, History  
and Records Management
6. William R. Wilson House, Southwest  
Facade, 203 No. Gadsden Street
7. Photo No. 27

LE209

ORIGINAL LE209

FOR NPS USE ONLY

RECEIVED

DATE ENTERED

# NATIONAL REGISTER OF HISTORIC PLACES INVENTORY -- NOMINATION FORM

SEE INSTRUCTIONS IN HOW TO COMPLETE NATIONAL REGISTER FORMS  
TYPE ALL ENTRIES -- COMPLETE APPLICABLE SECTIONS

## 1 NAME

HISTORIC Calhoun Street Historic District

ORIGINAL - NOT TO BE REMOVED  
FROM FILES

AND/OR COMMON

## 2 LOCATION

STREET & NUMBER  
See Continuation Sheet

NOT FOR PUBLICATION  
CONGRESSIONAL DISTRICT

CITY, TOWN  
Tallahassee

VICINITY OF  
2nd

STATE  
Florida

12

CODE

COUNTY  
Leon

CODE  
073

## 3 CLASSIFICATION

### CATEGORY

- DISTRICT
- BUILDING(S)
- STRUCTURE
- SITE
- OBJECT

### OWNERSHIP

- PUBLIC
- PRIVATE
- BOTH
- IN PROCESS
- BEING CONSIDERED

### PUBLIC ACQUISITION

### STATUS

- OCCUPIED
- UNOCCUPIED
- WORK IN PROGRESS
- ACCESSIBLE
- YES: RESTRICTED
- YES: UNRESTRICTED
- NO

### PRESENT USE

- AGRICULTURE
- COMMERCIAL
- EDUCATIONAL
- ENTERTAINMENT
- GOVERNMENT
- INDUSTRIAL
- MILITARY
- MUSEUM
- PARK
- PRIVATE RESIDENCE
- RELIGIOUS
- SCIENTIFIC
- TRANSPORTATION
- OTHER:

## 4 OWNER OF PROPERTY

NAME  
See Continuation Sheet

STREET & NUMBER

CITY, TOWN

STATE

VICINITY OF

## 5 LOCATION OF LEGAL DESCRIPTION

COURTHOUSE,  
REGISTRY OF DEEDS, ETC. Leon County Courthouse

STREET & NUMBER

CITY, TOWN

Tallahassee

STATE  
Florida

## 6 REPRESENTATION IN EXISTING SURVEYS

TITLE  
See Continuation Sheet

DATE

FEDERAL STATE COUNTY LOCAL

DEPOSITORY FOR  
SURVEY RECORDS

CITY, TOWN

SEE SITE FILE STAFF FOR  
ORIGINAL PHOTO(S) OR MAP(S)

UNITED STATES DEPARTMENT OF THE INTERIOR  
HERITAGE CONSERVATION AND RECREATION SERVICE

FOR HCRS USE ONLY
RECEIVED
DATE ENTERED

# NATIONAL REGISTER OF HISTORIC PLACES INVENTORY -- NOMINATION FORM

CONTINUATION SHEET

ITEM NUMBER 1 PAGE 1

The Calhoun Street Historic District nomination is a resubmission of Zone I of the original Tallahassee Historic District. Since the original submission in 1971, extensive historical information has been found. Because of this and the omission of several important structures, we feel a new nomination is more appropriate than extensive addenda.

We are also submitting the Tallahassee Historic District, Zones I and II as two separate districts. These nominations have therefore been resubmitted to the State Review Board and approved for renomination as individual districts.

The new Calhoun Street Historic District is bounded on the south and west by major four-lane commercial thoroughfares, U.S. 90 (East Tennessee Street) and U.S. 27 (North Monroe Street) which preclude any extension of the District in those directions. The north and east boundaries are defined by neighborhood changes, developmental periods and topographic features. We have also included an outline of the new Park Avenue Historic District (formerly Zone II) on the map to show its geographical relationship.

UNITED STATES DEPARTMENT OF THE INTERIOR  
HERITAGE CONSERVATION AND RECREATION SERVICE

FOR HCRS USE ONLY
RECEIVED
DATE ENTERED

### NATIONAL REGISTER OF HISTORIC PLACES INVENTORY -- NOMINATION FORM

CONTINUATION SHEET

ITEM NUMBER 2 PAGE 1

Location

Streets Running East to West

East Virginia Street	314-423
East Georgia Street	315
Micossukee Road	500
	516

Streets Running North to South

North Calhoun Street	317-525
North Gadsden Street	310
	314 <sup>2</sup>
	410
North Meridian Road	329
	406

ITEM NUMBER 6 PAGE 1

Survey/Tallahassee Capitol Center Survey/Florida Division of Archives,  
History and Records Management/1975/Florida Division of Archives, History  
and Records Management

Survey/Historic American Building Survey/Historic American Building  
Survey/1962/Library of Congress

ITEM NUMBER 10 PAGE 1

UTM Perimeter

	<u>Zone</u>	<u>Easting</u>	<u>Northing</u>
A	16	761180	3371380
B	16	761360	3371380
C	16	761580	3371240
D	16	761580	3371020
E	16	761160	3371020

UNITED STATES DEPARTMENT OF THE INTERIOR  
NATIONAL PARK SERVICE

**NATIONAL REGISTER OF HISTORIC PLACES  
INVENTORY -- NOMINATION FORM**

FOR NPS USE ONLY

RECEIVED

DATE ENTERED

CONTINUATION SHEET

ITEM NUMBER 4 PAGE 1

Billie M. Murphy  
Post Office Box 845  
Tallahassee, Fl. 32302

Democratic Executive Committee  
135 South Monroe St.  
Tallahassee, Fl. 32301

Horace Sellers  
Post Office Box 606  
Tallahassee, Fl. 32302

Mr. and Mrs. D. F. McMullen  
315 E. Georgia St.  
Tallahassee, Fl. 32301

Salvation Army  
317 N. Calhoun Street  
Tallahassee, Fl. 32301

William D. Corry and Philip J. Padavano  
518 N. Calhoun St.  
Tallahassee, Fl. 32301

Jean Rich  
6101 Buck Lake Road  
Tallahassee, Fl. 32301

John J. and M. M. Morrissey  
512 N. Calhoun St.  
Tallahassee, Fl. 32301

William M. Bishop Trustees  
Bishop Investment  
Post Office Box 3407  
Tallahassee, Fl. 32303

Tallahassee Federal Savings and  
Loan  
440 N. Monroe St.  
Tallahassee, Fl. 32303

Jerry V. and Sari M. Wilkey  
277 Miller Landing Rd.  
Tallahassee, Fl. 32301

C. Vanbrunt Lewis  
Post Office Box 10146  
Tallahassee, Fl. 32303

Emery Csikos  
316 East Virginia St.  
Tallahassee, Fl. 32301

FSU Foundation, Inc.  
Room 415, Wescott Building  
Florida State University  
Tallahassee, Fl. 32306

Bessie L. Wells  
c/o Polly Wetmore  
510 Martin St.  
Tallahassee, Fl. 32308

Florida Heritage Foundation  
2227 Ruadh Ride  
Tallahassee, Fl. 32303

Phebe B. Quarterman  
411 N. Calhoun St.  
Tallahassee, Fl. 32301

Talaflo Investment Co.  
440 N. Monroe St.  
Tallahassee, Fl. 32303

Jack G. Whiddon, et. al.  
410 N. Gadsden St.  
Tallahassee, Fl. 32301

E. M. McMullen  
315 E. Georgia St.  
Tallahassee, Fl. 32301

Florida Sunshine Apartments Inc.  
c/o Jack Madigan  
Brock Building  
Tallahassee, Fl. 32301

Mary Adore Coloney  
512 William St.  
Tallahassee, Fl. 32303

(See Continuation Sheet)

UNITED STATES DEPARTMENT OF THE INTERIOR  
HERITAGE CONSERVATION AND RECREATION SERVICE

FOR HCRS USE ONLY  
RECEIVED  
DATE ENTERED

**NATIONAL REGISTER OF HISTORIC PLACES  
INVENTORY -- NOMINATION FORM**

CONTINUATION SHEET

ITEM NUMBER

4

PAGE

2

Tallahassee Garden Club Inc.  
507 N. Calhoun St.  
Tallahassee, Fl. 32301

George and R. S. Yost  
Post Office Box 3053  
Tallahassee, Fl. 32303

Ernestine L. Chesley  
401 E. Virginia St.  
Tallahassee, Fl.

Herman Gunter Estate  
516 Miccosukee Rd.  
Tallahassee, Fl. 32303

Mary E. Crowson Life Estate  
Calvin L. Crowson, et al.  
500 Miccosukee Rd.  
Tallahassee, Fl. 32303

Edward K. Walker  
547 N. Monroe St.  
Tallahassee, Fl. 32301

**7 DESCRIPTION**

LE209

<b>CONDITION</b>		<b>CHECK ONE</b>	<b>CHECK ONE</b>
<input type="checkbox"/> EXCELLENT	<input type="checkbox"/> DETERIORATED	<input type="checkbox"/> UNALTERED	<input type="checkbox"/> ORIGINAL SITE
<input checked="" type="checkbox"/> GOOD	<input type="checkbox"/> RUINS	<input checked="" type="checkbox"/> ALTERED	<input type="checkbox"/> MOVED DATE _____
<input type="checkbox"/> FAIR	<input type="checkbox"/> UNEXPOSED		

**DESCRIBE THE PRESENT AND ORIGINAL (IF KNOWN) PHYSICAL APPEARANCE**

The Calhoun Street Historic District is one of the oldest and most important residential neighborhoods in Tallahassee which has survived from the 1840's to the present day. The houses which line North Calhoun and East Virginia Streets are a spectrum of architectural styles used between 1840 and 1940 and though conservative and provincial, are nonetheless good examples of their times and clearly reflect the area's continuing evolution as an important residential neighborhood. The District also has an important spacial quality resulting from the canopy of large, live oak trees that line its streets and are clustered around several intersections.

The majority of buildings in the District are oriented along the two major axes: Calhoun Street (fig. 1) running north-south (three blocks between Georgia and Tennessee Streets) and East Virginia Street running east-west (two blocks between Meridian Road and North Calhoun Street). Although a portion of Gadsden Street, paralleling Calhoun Street to the east is included in the District, there are only three remaining buildings all of which date from the 20th century which actually face the street: 310 (1907), 314 (c.1940) and 410 (1934) Gadsden Street. The Chesley House (fig. 2) (401 Virginia Street) a large 1 1/2 story Queen Anne style cottage built in 1895, was designed with a corner entrance and never quite committed itself to either street.

When Tallahassee's North Addition, which includes the District, was platted in 1827, rectangular lots (85' X 130' and 85' X 170') were laid out along the north-south streets. This configuration fostered the linear development along Monroe Street, Calhoun Street and Gadsden Street that occurred throughout most of the nineteenth century. Subdivision of the lots along Virginia Street since the turn-of-the-century created the secondary east-west axis (fig. 3) which today provides a link between the Calhoun Street neighborhood and the Brokaw-McDougall House (fig. 25) (329 Meridian Road) (1856) (NR) located at the eastern terminus of Virginia Street.

The disposition of houses along the west side of Calhoun Street largely coincides with the original lot configuration, 85' X 130' parcels facing the street and sharing a common boundary with equal parcels facing Monroe Street. Both the William D. Bloxham House (fig. 4) (1844) (410 Calhoun Street) (NR), Tallahassee's only surviving 19th century town-house form and the unusual Randall-Lewis House (fig. 5) (1843) (424 Calhoun Street) (NR) attest to this pattern. Subsequent construction in the twentieth century, the Richard A. Shine House (fig. 6) (1907) (NR), a 2 1/2 story Colonial Revival style house at 318 North Calhoun Street, the R. H. Gibson House (1925) (NR), a 1-story bungalow at 512 North Calhoun Street and its companion house



FOR HCRS USE ONLY

RECEIVED

DATE ENTERED

**NATIONAL REGISTER OF HISTORIC PLACES  
INVENTORY -- NOMINATION FORM**

CONTINUATION SHEET

ITEM NUMBER 7 PAGE 1

(fig. 7) (1925) (518 Calhoun Street) (NR) perpetuated this consistent orientation and street scape. Several vacant lots among these were also occupied by individual houses dating from the street's first development in the 1840's and its later period. The houses along the eastern side of Calhoun Street, however, offer a far less consistent street-scape and reflect different property ownership patterns. The Claire Bowen House (fig. 8) (325 Calhoun Street) (NR) the oldest house in the District, was built in 1841 as speculative housing. Although it is an excellent example of the Greek Revival style with 2-story incised galleries on three sides of the building, its awkward orientation across the narrow dimension of the lot and its proximity to the streets are probably indicative of its speculative construction. The lots in both blocks north of Virginia Street were in large holdings rather than owned individually. Both the Simon Towle House (fig. 9) (1847) (517 Calhoun Street) (NR) and the Henry L. Rutgers House (fig. 10) (1848) (507 Calhoun Street) (NR) were built on parcels comprised of four lots. The Rutgers House built by the same builder as the Randall-Lewis House, is a large 1 1/2-story frame residence with characteristics of the late Georgian period, e.g. tri-partite windows, and double-pile plan, although it has been altered, it remains on its original undeveloped parcel. Its neighbor, to the north, the Towle House, however, has had the northern half of its original property sub-divided and developed in the twentieth century. The C. L. Mizell House (fig. 11) (1907) (525 Calhoun Street) (NR), a 2-story frame Colonial Revival residence and the adjacent D. Fred McMullen House (1948) (315 Georgia Street), a one-story brick house of the early post-war years, were built on two of the original four lots.

The block in the center of the District is dominated by the 12-story Georgia Bell Dickinson Apartments (fig. 12) (301 East Carolina Street). The building occupies the site of the house built in 1841 by Robert W. Williams who originally owned the entire block. This house was demolished in the 1950's and later replaced by the existing concrete and glass high-rise. Between 1879 and 1946 the southern half of this block was gradually subdivided by subsequent owners of the Williams property. It currently has six residences including the neighborhood's first apartment building, the Lee Apartments (fig. 13) (1946) (314 Virginia Street) (NR), a small 4-unit 2-story brick structure with mild Colonial Revival detailing. The Bradford-Cobb House (fig. 14) (1879) (403 Calhoun Street) (NR), a 1 1/2-story frame Gothic Revival cottage with porches and decorative brackets, was the

(11/78)

UNITED STATES DEPARTMENT OF THE INTERIOR  
HERITAGE CONSERVATION AND RECREATION SERVICE

LE209

FOR HCRS USE ONLY

RECEIVED

DATE ENTERED

## NATIONAL REGISTER OF HISTORIC PLACES INVENTORY -- NOMINATION FORM

CONTINUATION SHEET

ITEM NUMBER 7

PAGE 2

first addition to the block at its southwest corner. The second subdivision of this block resulted in the construction of the Ida B. Bradford House (fig. 15) (324 East Virginia Street) in 1900. It is a 2-story Colonial Revival residence indicative of a number of neighborhood houses built in the succeeding decade, e.g., Shine House (1907) (318 Calhoun Street) (see fig. 6), William H. Markham House (1909) (317 Calhoun Street) (fig. 16), Mizell House (1907) (525 Calhoun Street) (see fig. 11), William W. Perkins House (1907) (310 Gadsden Street) (fig. 17). The Phebe Brokaw Quarterman House (fig. 18) (411 Calhoun Street), a bungalow style house sheathed entirely with wood shingles, was added to the block in 1927 and a brick one-story Tudor Revival style house (fig. 19) (410 Gadsden Street) was built in 1933 but oriented toward Gadsden Street. Two additional buildings, the Emery Csikos House (fig. 20) (316 Virginia Street) and the Lee Apartments (see fig. 13) (314 Virginia Street) were built in 1935, and 1946 respectively.

With the construction of the Bradford House in 1900 (see above), the development of Virginia Street had started. Several houses along the eastern portion of the street (between Gadsden and Meridian) were added between 1900 and 1910: the much altered Martha D. Messer House (fig. 21) (1903) (417 Virginia Street), a substantial 2 1/2-story frame Queen Anne style house; the James T. Perkins House, a small 1-story frame cottage (fig. 22) (1901) (423 Virginia Street) and the altered Margaret W. Cotten House (fig. 23) (1910) (406 North Meridian Road). A four-building apartment complex along the north side of this block constructed in the ca. 1970 replaced some additional individual residences. The James L. Cresap House (fig. 24) (317 Virginia Street), a one-story bungalow with classical detailing, was built in 1927. A parking lot at the southwest corner of the intersection of Gadsden and Virginia Streets was originally occupied by a house dating from the antebellum period. The two additional residences at 310 (see fig. 17) and 314 Gadsden Street, built in 1909 and ca. 1940 respectively, reinforced the residential character of the area.

The residential development along Virginia Street clearly linked the Calhoun Street neighborhood with the Brokaw-McDougall House (see fig. 25) (1856) (NR) at its eastern terminus. Although this house was situated in a formally landscaped garden on the western edge of the extensive land holdings of the Brokaw family, the large, frame 2-story suburban villa with stylistic characteristics of both the Greek Revival and the Italianate remained somewhat removed from the

10

UNITED STATES DEPARTMENT OF THE INTERIOR  
HERITAGE CONSERVATION AND RECREATION SERVICE

**NATIONAL REGISTER OF HISTORIC PLACES  
INVENTORY -- NOMINATION FORM**

FOR HCRS USE ONLY  
RECEIVED  
DATE ENTERED

CONTINUATION SHEET

ITEM NUMBER 7 PAGE 3

neighborhood. Today, however, as the headquarters of the Historic Tallahassee Preservation Board, it forms something of a focal point, both visually and figuratively for the Calhoun Street Historic District. Construction of two additional residences in 1912 at 500 and 516 (fig. 26) Miccosukee Road to the north of the Brokaw-McDougall House solidified this neighborhood relationship. Because the terrain to the east of this group drops off rather rapidly, another neighborhood of the 1930's developed.

The scale and set-back of the residences throughout the District is largely uniform and reinforced by the continued use of traditional building materials - wood and brick. Because the area has evolved over a century as a residential neighborhood, most later construction has been infill of a similar character for a similar use. Wholesale demolition and massive reconstruction have not occurred except to areas immediately south, along Tennessee Street, and west along Monroe Street, where four lane roads have exerted extreme pressures for commercial strip development. Although the function of the neighborhood has begun to change from single to multiple-residential and office use, the density has not been seriously affected. These changes have largely resulted in alterations of varying degrees to individual structures, e.g., the Bloxham House (see fig. 4) converted to a residential hotel in 1947, the Messer House (see fig. 21) converted to apartments in the 1960's and the Bowen House (see fig. 8), the Randall-Lewis House (see fig. 5), the Bradford-Cobb House (see fig. 14), and the Cresap House (see fig. 24) all converted to office use in the last decade. With the exception of the Georgia Bell Dickinson Apartments and the Embassy House Apartment complex (outside the district) the scale of the neighborhood has remained intact since first developed in the 1840's. And, the canopy of live oak trees lining Calhoun Street and the area around the Brokaw-McDougall House add an irreplaceable quality to the Calhoun Street Historic District.

**NATIONAL REGISTER OF HISTORIC PLACES  
INVENTORY -- NOMINATION FORM**

LE209

FOR HCRS USE ONLY
RECEIVED
DATE ENTERED

CONTINUATION SHEET

ITEM NUMBER 7 PAGE 4

BUILDING LIST

NORTH CALHOUN STREET

<u>Photo No.</u>	<u>Address/ Name</u>	<u>Use</u>	<u>Style</u>	<u>Classification</u>
16	317; 317½ William H. Markham	Civic	Colonial Revival 2-story frame 1-story gallery with square columns	C; NC
6	318 Richard A. Shine, Jr.	<i>NR</i> Residence	Colonial Revival 2½-story frame 1-story verandah with unfluted Corinthian columns	C
8	325 Claire Bowen	<i>NR</i> Office	Greek Revival 2½-story frame 2-story incised gallery with Doric columns	C
14	403 Bradford-Cobb	<i>NR</i> Vacant	Gothic Revival 1½-story frame 2 1-story porches with bracketed posts	C
4	410 William D. Bloxham	<i>NR</i> Apartments	Federal 2½-story brick townhouse 1-story verandah with paired colonnettes	A
18	411a, 411b, 411½, 413 Phebe Brokaw Quarterman	Residence/ Apartments	Bungalow with associated garage 1½-story frame 1-story porch with brick and shingled piers and porte cochere	C
5	424 Randall-Lewis	<i>NR</i> Office	Greek Revival 1½-story brick and raised basement scored stucco double-pile, center hall	C
	504 (see 512)	Apartments		C

LE209

FOR HCRS USE ONLY

RECEIVED

DATE ENTERED

NATIONAL REGISTER OF HISTORIC PLACES  
INVENTORY -- NOMINATION FORM

CONTINUATION SHEET

ITEM NUMBER 7 PAGE 5

BUILDING LIST

NORTH CALHOUN STREET

<u>Photo No.</u>	<u>Address/ Name</u>	<u>Use</u>	<u>Style</u>	<u>Classification</u>
10	507 Henry L. Rutgers	<i>NR</i> Civic	Greek Revival 1½-story frame double-pile center hall	C
	512 R. H. Gibson I	<i>NR</i>	Bungalow 1-story frame 1-story porch with brick piers porte cochere and associated garage (504)	C
9	517 Simon Towle	<i>NR</i> Office	Greek Revival 2-story frame 2-story portico with panelled columns	C
7	518 R. H. Gibson II	<i>NR</i> Office	Bungalow 1-story verandah with brick piers porte cochere	C
11	525 C. L. Mizell	<i>NR</i> Apartments	Colonial Revival 2½-story frame 1-story verandah with battered columns	C

LE 2009

FOR HCRS USE ONLY  
RECEIVED  
DATE ENTERED

NATIONAL REGISTER OF HISTORIC PLACES  
INVENTORY -- NOMINATION FORM

CONTINUATION SHEET

ITEM NUMBER 7 PAGE 6

BUILDING LIST

NORTH GADSDEN STREET

<u>Photo No.</u>	<u>Address/ Name</u>	<u>Use</u>	<u>Style</u>	<u>Classi- fication</u>
17	310 William W. Perkins	Retail/ Apartments	Queen Anne 2½-story frame on raised basement 1-story verandah with Tuscan columns	C
	314	Office	Tudor Revival 1-story brick 1-story porch	C
19	410	Residence	Tudor Revival 1½-story brick and stucco	C

NORTH MERIDIAN ROAD

<u>Photo No.</u>	<u>Address/ Name</u>	<u>Use</u>	<u>Style</u>	<u>Classi- fication</u>
25	329 Brokaw-McDougall NR	Government	Greek Revival/Italiannate 2-story frame with cupola 1-story gallery with Corinthian columns	C
23	406 Margaret Cotten	Apartments	Queen Anne 2½-story altered 1-story porch	A

14

UNITED STATES DEPARTMENT OF THE INTERIOR  
HERITAGE CONSERVATION AND RECREATION SERVICE

**NATIONAL REGISTER OF HISTORIC PLACES  
INVENTORY -- NOMINATION FORM**

FOR HCRS USE ONLY  
RECEIVED  
DATE ENTERED

CONTINUATION SHEET

ITEM NUMBER 7 PAGE 7

BUILDING LIST

EAST VIRGINIA STREET

<u>Photo No.</u>	<u>Address/ Name</u>	<u>Use</u>	<u>Style</u>	<u>Classi- fication</u>
13	314 Lee Apartments	NR Apartments	Georgian Revival 2-story brick	C
20	316 Emery Csikos	Residence	Colonial Revival 1½-story brick arcaded loggia and porte cochere	C
24	317 James L. Cresap	Office	Bungalow 1½-story frame 1-story porch with brick piers and battered columns porte cochere	C
15	324 Ida B. Bradford	Apartments	Colonial Revival 2-story frame 1-story verandah with square posts	C
2	401 Edwin Chesley	Residence/ Apartments	Queen Anne 1½-story frame 1-story verandah with turned posts and brackets	C
21	417 Martha D. Messer	Apartments	Queen Anne 2½-story frame altered	A
22	423 James Perkins	Residence	Queen Anne Cottage 1-story frame 1-story porch with battered columns and brick piers	C

NATIONAL REGISTER OF HISTORIC PLACES  
INVENTORY -- NOMINATION FORM

LE209

FOR HCRS USE ONLY

RECEIVED

DATE ENTERED

CONTINUATION SHEET

ITEM NUMBER 7 PAGE 8

BUILDING LIST

EAST GEORGIA STREET

<u>Photo No.</u>	<u>Address/ Name</u>	<u>Use</u>	<u>Style</u>	<u>Classification</u>
	315 D. Fred McMullen	Residence	Colonial Revival 1-story brick entrance porch	A

EAST CAROLINA STREET

<u>Photo No.</u>	<u>Address/ Name</u>	<u>Use</u>	<u>Style</u>	<u>Classification</u>
12	301 Georgia Bell Dickinson	Apartments	New Brutalism 12-story reinforced concrete entrance marquee	NC

MICCOSUKEE ROAD

<u>Photo No.</u>	<u>Address/ Name</u>	<u>Use</u>	<u>Style</u>	<u>Classification</u>
	500 Mary E. Crowson	Residence	Colonial Revival 2-story frame porches with brick piers	A
26	516 Herman Gunter	Residence	Colonial Revival 2½-story frame 1-story gallery with clustered colonnetes on stone piers	C

16



(11/78)

UNITED STATES DEPARTMENT OF THE INTERIOR  
HERITAGE CONSERVATION AND RECREATION SERVICE

**NATIONAL REGISTER OF HISTORIC PLACES  
INVENTORY -- NOMINATION FORM**

LE 209  
FOR HCRS USE ONLY

RECEIVED

DATE ENTERED

CONTINUATION SHEET

ITEM NUMBER 7 PAGE 9

Building Classification:

Conforming:

(Red)

Structures which have associations consistent with the District's use, scale and periods of development. (Age is not necessarily a factor.)

Altered:

(Yellow)

Buildings eligible for the Conforming category except that major exterior alterations have changed the character and details of the original design (restorable).

Non-Conforming:

(Blue)

Structures which do not respect the neighborhood uses and architectural traditions of the proposed District. (Use, scale, set-back and building material are characteristics assessed.)

PERIOD	AREAS OF SIGNIFICANCE -- CHECK AND JUSTIFY BELOW				
<input type="checkbox"/> PREHISTORIC	<input type="checkbox"/> ARCHEOLOGY-PREHISTORIC	<input type="checkbox"/> COMMUNITY PLANNING	<input type="checkbox"/> LANDSCAPE ARCHITECTURE	<input type="checkbox"/> RELIGION	
<input type="checkbox"/> 1400-1499	<input type="checkbox"/> ARCHEOLOGY-HISTORIC	<input type="checkbox"/> CONSERVATION	<input type="checkbox"/> LAW	<input type="checkbox"/> SCIENCE	
<input type="checkbox"/> 1500-1599	<input type="checkbox"/> AGRICULTURE	<input type="checkbox"/> ECONOMICS	<input type="checkbox"/> LITERATURE	<input type="checkbox"/> SCULPTURE	
<input type="checkbox"/> 1600-1699	<input type="checkbox"/> ARCHITECTURE	<input type="checkbox"/> EDUCATION	<input type="checkbox"/> MILITARY	<input checked="" type="checkbox"/> SOCIAL/HUMANITARIAN	
<input type="checkbox"/> 1700-1799	<input type="checkbox"/> ART	<input type="checkbox"/> ENGINEERING	<input type="checkbox"/> MUSIC	<input type="checkbox"/> THEATER	
<input checked="" type="checkbox"/> 1800-1899	<input type="checkbox"/> COMMERCE	<input checked="" type="checkbox"/> EXPLORATION/SETTLEMENT	<input type="checkbox"/> PHILOSOPHY	<input type="checkbox"/> TRANSPORTATION	
<input checked="" type="checkbox"/> 1900-	<input type="checkbox"/> COMMUNICATIONS	<input type="checkbox"/> INDUSTRY	<input checked="" type="checkbox"/> POLITICS/GOVERNMENT	<input type="checkbox"/> OTHER (SPECIFY)	
		<input type="checkbox"/> INVENTION			

SPECIFIC DATES 1840-1940

BUILDER/ARCHITECT

STATEMENT OF SIGNIFICANCE

The Calhoun Street Historic District is significant because it represents one hundred years, 1840-1940, of the evolution of a residential neighborhood where many of the political, economic and social leaders of Tallahassee and Florida resided. Construction in the District reflects two primary periods of development: 1841-1860 and 1879-1912, although several houses were added to the neighborhood in the 1920's and 1930's. Calhoun Street, the focal point of the District, began to develop as a neighborhood for prominent members of the Tallahassee community in the 1840's. Its residents included leading merchants, attorneys, planters, a banker, and a leading builder, many of whom were active in state and local politics. Construction between 1879 and 1912 reflects the economic revival of Tallahassee after the difficult years following the Civil War, although the town was never again to achieve the affluence or the state wide importance of antebellum days. During this period Calhoun Street was popularly known as the "Gold Dust" street, a term descriptive of the continued importance of the residents in the life of the city.<sup>1</sup>

Tallahassee has been the capital of Florida for more than 155 years. Officially designated as the site for the territorial capital in 1824, Tallahassee became the state capital when Florida was admitted to the Union in 1845. During the antebellum period Tallahassee was not only the center of political life of the state, it was the center of the economic and social life as well. The preeminence enjoyed by the town and surrounding Leon County before the Civil War can be attributed to a combination of factors. Early settlers were attracted to Tallahassee because of its role as the capital; and, more importantly, because of the rich agricultural land in the surrounding county. This latter circumstance saw substantial numbers of affluent planters migrate to the area from Virginia, the Carolinas, and Georgia bringing not only financial resources but an established culture, as well.

Despite initial hardships, the planters prospered from the cotton their land and slaves produced. Solon Robinson, America's foremost nineteenth century agricultural writer, described the planters of Leon as "real land destroyers," but conceded that they were "real money makers" and "a high bred(sic) of inhabitants." Robinson also

LE209

UNITED STATES DEPARTMENT OF THE INTERIOR  
HERITAGE CONSERVATION AND RECREATION SERVICE

FOR HCRS USE ONLY
RECEIVED
DATE ENTERED

# NATIONAL REGISTER OF HISTORIC PLACES INVENTORY -- NOMINATION FORM

STATEMENT OF SIGNIFICANCE  
CONTINUATION SHEET

ITEM NUMBER 8 PAGE 1

described the farm land as the "finest red land in America."<sup>2</sup> In the golden decade of the 1850's, Leon County produced some 16,000 bales of cotton annually, compared with 10,000 bales for Jefferson County and 6,000 for Gadsden. Cotton production in Leon County in 1860 exceeded all but seven counties in Georgia and twenty-one in Alabama.<sup>3</sup>

The cotton economy in turn supported a thriving merchant community in Tallahassee. The planter-merchant oligarchy was a close-knit society. It was not uncommon for men to have interests in both endeavors. Furthermore, many kinsmen had come together to settle in the Territory, intermarrying with others of the same social status. Within a generation they had established the way of life similar to what they had known in the upper South. However, the loss of slave labor and the economic depression wrought by the defeat in 1865 destroyed the plantation system. Large holdings were divided into tenant farms and the majority of the once wealthy owners were forced to move into town or leave the area.<sup>4</sup> The culture and the conservative values which had set the tone and character of Tallahassee and Leon County before the Civil War continued to dominate the minds of Tallahasseans long after the affluence of pre-war days had disappeared.<sup>5</sup> In post Civil War Tallahassee, white society was popularly divided into three categories: the "gold dusters", the "hominey huskers" and the "depot greasers."<sup>6</sup> Gold dusters were middle and upper middle class whites who had lived in the area before the Civil War, maintained reasonable wealth in the late nineteenth century, and adhered to "traditional genteel behavior and reverence for tradition", hence Calhoun Street's connotation as the "Gold Dust" Street. Hominey huskers were the rural poor. The lowest class, depot greasers, lived near or worked in the railroad repair shops.<sup>7</sup>

With no significant industrialization, Tallahassee remained a small provincial town well into the twentieth century, modestly prosperous as a mercantile center and as the state capital, with a stable population and social fabric. This stability and sense of tradition over a one hundred year period is reflected in the houses in the District and in the lives of their owners. Homes built before the Civil War remained in the same family or were later owned by families of equal standing in the community. Only since 1940 has the neighborhood ceased to be exclusively residential.

There are six remaining buildings within the Calhoun Street Historic District dating from the pre-Civil War period - the Bowen,

LE 209

FOR HCRS USE ONLY  
RECEIVED  
DATE ENTERED

**NATIONAL REGISTER OF HISTORIC PLACES  
INVENTORY -- NOMINATION FORM**

STATEMENT OF SIGNIFICANCE  
CONTINUATION SHEET

ITEM NUMBER 8 PAGE 2

Bloxham, Rutgers, Randall-Lewis, Towle and Brokaw-McDougall Houses. Four of these, the Bowen, Randall-Lewis, Rutgers, and Brokaw McDougall Houses, have been adapted for civic or commercial use retaining their residential character. The Towle house at present is undergoing restoration as offices for the Florida Democratic Executive Committee. The Florida Heritage Foundation purchased the Bloxham house in 1977 and plans to restore it.

The Bowen House (fig. 8) (325 North Calhoun Street, National Register) is probably the oldest house in the District. Available evidence indicates that this house was erected by speculative builders, A. B. and B. O. Weeks, in 1841. The house is unusual for its period because the plan was designed by an architect, T. Bryant of Boston, Massachusetts.<sup>8</sup> James Kirksey, the first resident, was both a large landowner and a prosperous merchant in Tallahassee for over thirty years. He also served on the City Council in the 1840's and as mayor in 1847.<sup>9</sup> Kirksey left Tallahassee in the 1870's selling his home to C. E. Dyke, the Floridian editor, one of the most respected journalists of his era. In 1885 Dyke sold his home and newspaper to his partner, Newton Marion Bowen. His daughter, Claire Bowen, lived in the family home until 1973.<sup>10</sup> In the 1940's Miss Claire led the successful fight to save the large live oaks on North Calhoun Street from the destruction that had befallen those south of Tennessee Street.<sup>11</sup>

Captain Richard A. Shine, Tallahassee's foremost builder and brick mason, built the house now known as the Bloxham House (fig. 4) (410 North Calhoun Street, National Register) in 1844. Soon after, Shine leased and later sold the house to David C. Wilson. Wilson founded the forerunner of Wilson's Department Store, a family business that finally closed its doors in 1971. Wilson also served four terms on the City Council between 1830 and 1850.<sup>12</sup> The Bloxham house takes its name from its most illustrious owner, William D. Bloxham, twice Governor of Florida, 1881-1885 and 1897-1901. Bloxham, a native Tallahasseean, is remembered as one of Florida's most able chief executives. Among his many accomplishments, Bloxham was instrumental in establishing teachers' institutes and normal schools for Floridians of both races. As a direct result of his efforts, Florida Normal and Agricultural College for Colored Students, now Florida Agricultural and Mechanical University, was established in 1887 in Tallahassee.<sup>13</sup> Bloxham purchased the home on

UNITED STATES DEPARTMENT OF THE INTERIOR  
HERITAGE CONSERVATION AND RECREATION SERVICE

FOR HCRS USE ONLY

RECEIVED

DATE ENTERED

## NATIONAL REGISTER OF HISTORIC PLACES INVENTORY -- NOMINATION FORM

STATEMENT OF SIGNIFICANCE  
CONTINUATION SHEET

ITEM NUMBER 8 PAGE 3

Calhoun Street at the beginning of his first term (an official governor's residence was not constructed until 1906). Governor Edward A. Perry, Bloxham's successor, rented the house during his term of office. In 1913 Bloxham's widow sold the home and it passed through several owners. In the 1940's it was divided into apartments and is now known as the Bloxham House Hotel.<sup>14</sup>

The Randall-Lewis House (fig. 5) (424 North Calhoun Street, National Register) has an equally distinguished list of owners. The house was built in 1843-1844 for Henry L. Rutgers. Originally a New Yorker, Rutgers settled in Tallahassee during territorial days becoming a prominent banker and entrepreneur. He also served on the City Council and as Territorial Treasurer; both a sailing packet and a steam locomotive were named in his honor.<sup>15</sup> The Randall-Lewis House bears the names of Judge Thomas Randall who lived there from 1850 until 1870 and that of the George Lewis family.

Randall purchased the house from Rutgers in 1850. He had come to the Florida Territory from Maryland in the late 1820's to serve as one of three territorial judges and settled on a plantation in nearby Jefferson County. Randall moved to town in 1850 and soon established a successful law practice.<sup>16</sup> The George Lewis family made the residence their home from 1870 until 1887. Lewis, a banker and civic leader, was the son of B. C. Lewis, the founder of the Lewis State Bank. During the Lewis residency indoor plumbing powered by a windmill was installed in the house, which legend says was the first in Tallahassee. Later owners of the Randall-Lewis House included C. B. Collins, Treasurer of the State of Florida and George Saxon, founder of the Capital City Bank.<sup>17</sup>

George Proctor, a free Black and master builder in the 1830's and 1840's, constructed the Randall-Lewis House. Proctor was one of the most interesting figures of early Tallahassee history, and a commanding personality in his own right. Heavy debts and impending bankruptcy forced Proctor to leave his family in 1849 to seek his fortune in California. He never returned to his native state.<sup>18</sup> In early 1849 Proctor completed a house diagonally across the intersection from the Randall-Lewis House for Rutgers who moved his family there. This home (fig. 10) (507 North Calhoun Street, National Register) passed from the Rutgers family to Erastus Clark in 1893.

EE 209

UNITED STATES DEPARTMENT OF THE INTERIOR  
HERITAGE CONSERVATION AND RECREATION SERVICE

FOR HCRS USE ONLY
RECEIVED
DATE ENTERED

# NATIONAL REGISTER OF HISTORIC PLACES INVENTORY -- NOMINATION FORM

STATEMENT OF SIGNIFICANCE  
CONTINUATION SHEET

ITEM NUMBER

8

PAGE

4

Clark was the town's best known clock and watchmaker. His descendants lived in the home until the 1950's. The Rutgers House has been the headquarters of the Tallahassee Garden Club since 1954.<sup>19</sup>

The Towle House (fig. 9) (517 North Calhoun Street, National Register), the last of the five remaining homes constructed in the 1840's on Calhoun Street, was completed in 1847 for Simon Towle and his wife, Rebecca Parkhill Towle. Rebecca was a daughter of John Parkhill, one of the county's most prominent planters. In addition to a successful law practice, Towle was elected mayor of Tallahassee in 1846 and was appointed Comptroller of Florida in 1847, a position he held until 1850.<sup>20</sup>

Towle sold his home in 1854 to Richard Whitaker. Whitaker, who had previously lived on his plantation north of Tallahassee, was a member of the inner circle of the county's planter aristocracy. John Branch, Whitaker's uncle, was a former Governor and U. S. Senator from North Carolina as well as the last Territorial Governor of Florida. Family members continued to live in the house until the turn of the century. The Whitaker heirs sold the house to Miss Sallie Blake, a descendant of Miles Blake, another of Leon County's pioneer settlers. Miss Blake, active in civic and social circles in Tallahassee, was a charter member of the Woman's Club of Tallahassee. Her book filled with vignettes and recollections, Tallahassee of Yesterday, was published in 1924.<sup>21</sup> At present the Towle House is being restored by the Democratic Executive Committee of Florida for their headquarters.

The Brokaw-McDougall House (fig. 25) (329 North Meridian Road, National Register), was constructed between 1856 and 1860. Peres Bonney Brokaw arrived in Tallahassee in 1840 soon establishing himself in business and politics. He served on the City Council and in the House and Senate of the Florida Legislature. Brokaw's daughter, Phebe, married Alexander McDougall in 1878 thus giving the house its second name.<sup>22</sup> The Brokaw-McDougall house remained in the family until its 1973 purchase by the State of Florida. It has served as the offices of the Historic Preservation Board since that time. The house is the only example of a "suburban villa" still extant within the city. Although the Brokaw House was originally part of a substantial acreage, Brokaw selected a home site on the edge of his property, within close proximity to town, facing the

LE209

FOR HCRS USE ONLY  
RECEIVED  
DATE ENTERED

**NATIONAL REGISTER OF HISTORIC PLACES  
INVENTORY -- NOMINATION FORM**

STATEMENT OF SIGNIFICANCE  
CONTINUATION SHEET

ITEM NUMBER 8 PAGE 5

structure toward the established neighborhood.

During the second period of development (1879-1912) Calhoun Street continued as one of Tallahassee's prominent residential neighborhoods. As previously mentioned, the residents of the older homes included Governor William D. Bloxham and later Governor Edward A. Perry, as well as a newspaper editor, a banker, an attorney and other leading businessmen. The first new house on Calhoun Street was built for the John R. Bradford family in 1879 (fig. 14) (403 North Calhoun Street, National Register). Bradford, a member of the second generation of one of Leon County's pioneer families, was one of the leaders in the largely unsuccessful efforts to revive agriculture in the county through diversified farming in the late nineteenth century.<sup>23</sup> Elizabeth DeBerry Cobb purchased the Bradford home in 1921 and lived there until 1974. Mrs. Cobb, was one of Tallahassee's most respected educators; Elizabeth Cobb Middle School is named in her honor.<sup>24</sup> The Bradford-Cobb home is presently being restored for office use.

The remaining houses on Calhoun Street dating from the first decades of the twentieth century include: the Mizell House (fig. 11) (525 North Calhoun Street, National Register) named for banker C. L. Mizell; the Shine House (fig. 6) (318 North Calhoun Street, National Register) named for R. A. Shine, Jr., a prominent dentist and son of the early builder Richard Shine; and the Markham House, (fig. 16) (317 North Calhoun Street, National Register), built for William H. Markham, a merchant.<sup>25</sup> These latter remain residential in use except for the Markham structure which is now the headquarters of the Salvation Army.

The addition of houses along East Virginia Street, Meridian Road and Miccosukee Road, creating a link between Calhoun Street and the Brokaw-McDougall House, completed the second phase of the development of the Calhoun Street neighborhood. The remaining houses include: the Chesley House (fig. 2) (401 East Virginia Street) built for Edwin G. Chesley, a civil engineer; the Bradford House (fig. 15) (324 East Virginia Street) built on the lot adjacent to the Bradford-Cobb House for members of the Bradford family; the Cotten House (fig. 23) (406 North Meridian Road, but originally facing Virginia Street) built for a daughter of Frederick R. Cotten, whose wealth in antebellum days was exceeded by only one other planter in the county; and the Gunter House (fig. 26) (516 Miccosukee Road)

UNITED STATES DEPARTMENT OF THE INTERIOR  
HERITAGE CONSERVATION AND RECREATION SERVICE

FOR HCRS USE ONLY

RECEIVED

DATE ENTERED

## NATIONAL REGISTER OF HISTORIC PLACES INVENTORY -- NOMINATION FORM

STATEMENT OF SIGNIFICANCE

CONTINUATION SHEET

ITEM NUMBER 8 PAGE 6

and state geologist built for businessman Herman Gunter.<sup>26</sup> All of these houses serve as single or multiple residences.

Residences of a later construction date in the neighborhood include the Phebe Brokaw Quarterman House (fig. 18) (411 North Calhoun Street) and the James L. Cresap House (fig. 24) (317 East Virginia Street). Both homes were built in 1927 by Foster Gilmore, the leading contractor of his day.<sup>27</sup> The Cresap House has been adapted for office use. The Quarterman House is particularly significant because its original owners were Mary Quarterman West and her husband, Chief Justice of the Florida Supreme Court Thomas F. West. This structure remains in the Quarterman family.

After World War II Tallahassee entered a new period of growth and development, accelerated by the economic prosperity of the 1960's. As additional subdivisions and suburbs developed, the Calhoun Street area gradually lost its identity as an exclusive residential neighborhood. Older homes were divided into multiple residences, apartment buildings were constructed, and the neighborhood's proximity to the downtown area made it attractive for the present combination of office-residential use. Despite its change in function, the physical character of the neighborhood has not been seriously altered. On the contrary, the Calhoun Street neighborhood, through adaptive use, has become an excellent example of the effectiveness of preservation in a historical as well as a practical sense.

### FOOTNOTES

<sup>1</sup>Clifton Paisley, personal interview with Miss Claire Bowen, April 22, 1972, p. 2.

<sup>2</sup>Herbert Anthony Kellar (ed.), Solon Robinson, Pioneer and Agriculturalist, 1803-1880, II, 1846-1851, p. 462. Quoted in Clifton Paisley, From Cotton to Quail, An Agricultural Chronicle of Leon County, Florida, 1860-1967 (Gainesville: University of Florida Press, 1968), p. 6.

<sup>3</sup>Paisley, Cotton to Quail, pp. 6-7.

<sup>4</sup>Out of 319 farms in Leon County in 1860, 30 had 1,000 acres or more under cultivation. 53 had 500-1,000 and 132 had between 100-500. By end of the century there were 2,428 farms with the ma-



LE209

UNITED STATES DEPARTMENT OF THE INTERIOR  
NATIONAL PARK SERVICE

FOR NPS USE ONLY

RECEIVED

DATE ENTERED

NATIONAL REGISTER OF HISTORIC PLACES  
INVENTORY -- NOMINATION FORM

STATEMENT OF SIGNIFICANCE - FOOTNOTES (continued)  
CONTINUATION SHEET ITEM NUMBER 8 PAGE 7

jority holding 50 acres or less. See Alan J. Downes, "Change and Stability in Social Life: Tallahassee, Florida, 1870-1900," Master's Thesis, Florida State University, 1955, pp. 6-7, 9.

<sup>5</sup>Downes, "Change and Stability," p. 19.

<sup>6</sup>Ibid., p. 16.

<sup>7</sup>Ibid., p. 16-17.

<sup>8</sup>Leon County, Florida, Deed Records, Book G, pp. 112-113, located in the Leon County Courthouse, Tallahassee, Florida.

<sup>9</sup>Lee H. Warner and Mary B. Eastland, Tallahassee: Downtown Transitions (Tallahassee: Historic Tallahassee Preservation Board, 1976), pp. 14, 18, 22; Dorothy Dodd, "The Corporation of Tallahassee, 1826-1860, "Apalachee (1948-1950), pp. 95-96.

<sup>10</sup>Leon County, Florida, Deed Records, Book S, p. 563; Book U, p. 173, 245; Book AA, p. 63; Official Record 620, p. 235.

<sup>11</sup>Paisley, Bowen interview, pp. 15-16.

<sup>12</sup>Leon County, Florida, Deed Records, Book A, p. 232, Book F, p. 50, Book J, p. 567; Book I, p. 567; Book K, p. 383; see also Leon County Probate Files, Leon County Courthouse, Tallahassee, Florida, File 661; Warner, Transitions, pp. 14, 18; Dodd, "Corporation," p. 96.

<sup>13</sup>Leedell W. Neyland and John W. Riley, The History of Florida Agricultural and Mechanical University, (Gainesville: University of Florida Press, 1963), p. 2-3.

<sup>14</sup>Leon County, Florida, Deed Records, Book E, p. 64, Book G, p. 158, Book W, p. 377; Book 55, p. 454; Leon County Probate Files, File 1393.

<sup>15</sup>Leon County, Florida, Deed Records, Book I, p. 232; Mary B. Eastland and N. Paul Anthony AIA, "Randall-Lewis House" (Tallahassee: Historic Tallahassee Preservation Board, 1977).

<sup>16</sup>Leon County, Florida, Deed Records, Book K, p. 99; Eastland, "Randall-Lewis House".

UNITED STATES DEPARTMENT OF THE INTERIOR  
HERITAGE CONSERVATION AND RECREATION SERVICE

FOR HCRS USE ONLY

RECEIVED

DATE ENTERED

**NATIONAL REGISTER OF HISTORIC PLACES  
INVENTORY -- NOMINATION FORM**

STATEMENT OF SIGNIFICANCE - FOOTNOTES(continued)

CONTINUATION SHEET

ITEM NUMBER

PAGE 8

<sup>17</sup>Eastland, "Randall-Lewis House;" Leon County, Florida, Deed Records, Book R, p. 473; Book EE, p. 134; Book GG, p. 327.

<sup>18</sup>Eastland, "Randall-Lewis House."

<sup>19</sup>Leon County, Florida, Deed Records, Book I, p. 232; Book CC, p. 327; Book 169, p. 444; Leon County Probate Files, File 401.

<sup>20</sup>Sherry Dougherty, Untitled Report on the Towle House, Historic Tallahassee Preservation Board, Tallahassee, Florida, 1977, p. 2.

<sup>21</sup>Ibid., pp. 3-4, 9.

<sup>22</sup>Michael Schene, "Report on the Brokaw-McDougall House, Historic Tallahassee Preservation Board, Tallahassee, Florida.

<sup>23</sup>Leon County, Florida, Deed Records, Book U, p. 472; Paisley, Cotton to Quail, p. 42.

<sup>24</sup>Leon County, Florida, Deed Records, Book 3, p. 389.

<sup>25</sup>See Ibid., Book LL, p. 436; Book SS, p. 476; Leon County Probate Files, File 3313; and City of Tallahassee Tax Rolls, City Hall, Tallahassee, Florida, 1904, 1906, 1907 (Mizell-McMullen House). See Leon County, Florida, Deed Records, Book QQ, p. 71; and Leon County Tax Rolls, Leon County Courthouse, Tallahassee, Florida, 1905, 1907 (Shine House). See Leon County, Florida, Deed Records, Book II, p. 71, and Leon County Tax Rolls, 1908, 1909 (Markham House).

<sup>26</sup>See Leon County, Florida, Deed Records, Book FF, p. 269; Leon County Tax Rolls, 1896, 1897, and Sherry Dougherty, Interview with Mrs. Edwin G. Chesley, October 11, 1976 (Chesley House). See Leon County, Florida, Deed Records, Book II, p. 128; and Leon County Tax Rolls, 1900, 1901 (Bradford House). See Leon County, Florida, Deed Records, Book P, p. 80; Leon County Probate Files, File 804 A-B, 1676; and Leon County Tax Rolls 1904, 1905 (Cotten House). See Leon County, Florida, Deed Records, Book PP, p. 485, Book RR, p. 125; and Leon County Tax Rolls 1910, 1911, 1912 (Gunter House).

LE 209

FHR-8-300A  
(11/78)

UNITED STATES DEPARTMENT OF THE INTERIOR  
HERITAGE CONSERVATION AND RECREATION SERVICE

**NATIONAL REGISTER OF HISTORIC PLACES  
INVENTORY -- NOMINATION FORM**

FOR HCRS USE ONLY
RECEIVED
DATE ENTERED

STATEMENT OF SIGNIFICANCE-FOOTNOTES(continued)  
CONTINUATION SHEET                      ITEM NUMBER 8      PAGE 9

---

27 Leon County, Florida, Deed Records, Book 6, p. 325; Book 11, p. 407; Leon County Tax Rolls, 1926, 1927. Sherry Dougherty, Interview with Miss Phebe B. Quarterman, October 8, 1976; and Tallahassee Daily Democrat, February 16, 1926 (Quarterman House). See Leon County, Florida, Deed Records, Book 12, p. 91; and Leon County Tax Rolls, 1926, 1927, 1928 (Cresap House).

26

# MAJOR BIBLIOGRAPHICAL REFERENCES

LE209

See Continuation Sheet

## 10 GEOGRAPHICAL DATA

ACREAGE OF NOMINATED PROPERTY 21

UTM REFERENCES

See Continuation Sheet

A	<input type="text"/>	<input type="text"/>	<input type="text"/>
	ZONE	EASTING	NORTHING
C	<input type="text"/>	<input type="text"/>	<input type="text"/>

B	<input type="text"/>	<input type="text"/>	<input type="text"/>
	ZONE	EASTING	NORTHING
D	<input type="text"/>	<input type="text"/>	<input type="text"/>

VERBAL BOUNDARY DESCRIPTION

See Continuation Sheet

LIST ALL STATES AND COUNTIES FOR PROPERTIES OVERLAPPING STATE OR COUNTY BOUNDARIES

STATE	CODE	COUNTY	CODE
STATE	CODE	COUNTY	CODE

## 11 FORM PREPARED BY

NAME / TITLE

Dougherty, Sherry (Historian) and Deibler, Dan G. (Historic Sites Special-<sup>ist</sup>)

ORGANIZATION

Florida Division of Archives, History and Records Management 5-31-1979

STREET & NUMBER

The Capitol

DATE

TELEPHONE

(904) 487-2333

CITY OR TOWN

Tallahassee

STATE

Florida 32301

## 12 STATE HISTORIC PRESERVATION OFFICER CERTIFICATION

THE EVALUATED SIGNIFICANCE OF THIS PROPERTY WITHIN THE STATE IS:

NATIONAL

STATE

LOCAL

As the designated State Historic Preservation Officer for the National Historic Preservation Act of 1966 (Public Law 89-665), I hereby nominate this property for inclusion in the National Register and certify that it has been evaluated according to the criteria and procedures set forth by the National Park Service.

STATE HISTORIC PRESERVATION OFFICER SIGNATURE

TITLE

Deputy State Historic Preservation Officer

DATE

7/25/79

FOR NPS USE ONLY

I HEREBY CERTIFY THAT THIS PROPERTY IS INCLUDED IN THE NATIONAL REGISTER

DATE

DIRECTOR, OFFICE OF ARCHEOLOGY AND HISTORIC PRESERVATION

ATTEST:

DATE

KEEPER OF THE NATIONAL REGISTER

4

UNITED STATES DEPARTMENT OF THE INTERIOR  
HERITAGE CONSERVATION AND RECREATION SERVICE

FOR HCRS USE ONLY

RECEIVED

DATE ENTERED

**NATIONAL REGISTER OF HISTORIC PLACES  
INVENTORY -- NOMINATION FORM**

CONTINUATION SHEET

ITEM NUMBER 9 PAGE 1

City of Tallahassee, Florida. Tax Rolls. Located at City Hall, Tallahassee, Florida.

Dodd, Dorothy. "The Corporation of Tallahassee, 1826-1860," Apalachee 1948-1950, 80-95.

"Florida in 1845," Florida Historical Quarterly, XXIV (July, 1945), 3-29.

Dougherty, Sherry. Report on the Towle House. Located at Historic Tallahassee Preservation Board, Tallahassee, Florida.

Downes, Alan J. "Change and Stability in Social Life: Tallahassee, Florida, 1870-1900," Unpublished Master's Thesis, Florida State University, 1955.

Eastland, Mary B., and Anthony, N. Paul. "Randall-Lewis House," Tallahassee: Historic Tallahassee Preservation Board, 1977.

Groene, Berthram H. Ante-Bellum Tallahassee. Tallahassee: Florida Heritage Foundation, 1971.

Leon County, Florida. Deed Records, Probate Files, Tax Rolls. Located at the Office of the Clerk of the Circuit Court, Leon County Courthouse, Tallahassee, Florida.

Paisley, Clifton. From Cotton to Quail, an Agricultural Chronicle of Leon County, Florida, 1860-1967. Gainesville, Fl.: University of Florida Press, 1968.

Schene, Michael. Report on the Brokow-McDougall House. Located at the Historic Tallahassee Preservation Board, Tallahassee, Florida.

Warner, Lee and Eastland, Mary B. Tallahassee: Downtown Transitions. Tallahassee, Fl.: Historic Tallahassee Preservation Board, 1976.

UNITED STATES DEPARTMENT OF THE INTERIOR  
HERITAGE CONSERVATION AND RECREATION SERVICE

FOR HCRS USE ONLY
RECEIVED
DATE ENTERED

**NATIONAL REGISTER OF HISTORIC PLACES  
INVENTORY -- NOMINATION FORM**

CONTINUATION SHEET

ITEM NUMBER 10 PAGE 2

Verbal Boundary Description

- Beginning at a point (A) on the north side of East Georgia Street opposite the northwest corner of Lot 81 North Addition (NA), Section 36 T1N R1W; thence
- Eastward along the north side of East Georgia Street to a point (B) which is the northeast corner of the intersection of North Gadsden Street and East Georgia Street; thence
- Southward along the east side of North Gadsden Street to a point (C) which is the northeast corner of the intersection of North Gadsden Street and East Virginia Street; thence
- Eastward along the north side of East Virginia Street to a point (D) which is the southwest corner of Tax Parcel 3105 NA; thence
- North to a point (E) which is the northwest corner of Tax Parcel 3105 NA; thence
- East along the northern property line of Tax Parcel 3105 NA to a point (F) which is the northeast corner of Tax Parcel 3105 NA; thence
- Northward along the west side of North Meridian Road to a point (G) which is opposite the northwest corner of Lot 1, Eastview Addition, Section 31 T1N R1E; thence
- Eastward across North Meridian Road to a point (H) which is the northwest corner of Lot 1, Eastview Addition; thence
- Northeasterly along the northern property lines of Lots 1, 2, and 3, Eastview Addition to a point (I) which is the northernmost point of Lot 3; thence
- Southeasterly along the property line between Lots 3 and 4, Eastview Addition, and across Miccosukee Road to a point (J) on the south side of Miccosukee Road opposite the southeast corner of Lot 3, Eastview Addition; thence

See Continuation Sheet

UNITED STATES DEPARTMENT OF THE INTERIOR  
NATIONAL PARK SERVICE

FOR NPS USE ONLY

RECEIVED

DATE ENTERED

**NATIONAL REGISTER OF HISTORIC PLACES  
INVENTORY -- NOMINATION FORM**

CONTINUATION SHEET

ITEM NUMBER 10 PAGE 3

- Southwesterly along the south side of Miccosukee Road to a point (K) which is 151 feet west of the northeast corner of Tax Parcel 901, Section 31 T1N R1E; thence
- Eastward 151 feet to a point (L) which is the northeast corner of Tax Parcel 901, Section 31 T1N R1E; thence
- Southward 327 feet to a point (M) which is the southeast corner of Tax Parcel 901, Section 31 T1N R1E; thence
- Westward along the southern property line of Tax Parcel 901, Section 31 T1N R1E and across North Meridian Road to a point (N) on the west side of North Meridian Road opposite the southwest corner of Tax Parcel 901, Section 31 T1N R1E; thence
- Northward along the west side of North Meridian Road to a point (O) which is the southeast corner of Tax Parcel 3115 NA; thence
- West to a point (P) which is the southwest corner of Tax Parcel 3115 NA; thence
- South to a point (Q) which is the southeast corner of Tax Parcel 3125 NA; thence
- West along the southern property lines of Tax Parcel 3125 NA and 3130 NA to a point (R) which is the southwest corner of Tax Parcel 3130 NA; thence
- Southward along the east side of North Gadsden Street to a point (S) opposite the southeast corner of Lot 51 NA; thence
- Westward to a point (T) which is the southwest corner of Lot 51 NA; thence
- North along the west property line of Lot 51 NA to a point (U) which is the northwest corner of Lot 51 NA; thence
- West along the southern property lines of Lots 53 NA and 100 NA to a point (V) which is the southwest corner of Lot 100 NA; thence

See Continuation Sheet

CE209

UNITED STATES DEPARTMENT OF THE INTERIOR  
HERITAGE CONSERVATION AND RECREATION SERVICE

FOR HCRS USE ONLY
RECEIVED
DATE ENTERED

**NATIONAL REGISTER OF HISTORIC PLACES  
INVENTORY -- NOMINATION FORM**

CONTINUATION SHEET

ITEM NUMBER 10

PAGE 4

North along the western property lines of Lots 100 NA, 97 NA, 96 NA, 93 NA, and 92 NA to a point (W) which is the northwest corner of Lot 92 NA; thence

East 34 feet to a point (X); thence

North 85 feet to a point (Y); thence

West 34 feet to a point (Z) on the south side of East Carolina Street; thence

North across East Carolina Street and following the western property lines of Lots 88NA, 85 NA, 84 NA, and 81 NA to the point of beginning.



**Index by State and Name**

National Register Information System

09/24/2001 14:04:41

No filter

Include filter in navigation

Row	STATE ▾	COUNTY ▾	RESOURCE NAME ▾	ADDRESS ▾	CITY ▾	LISTED ▾	MULTIPLE ▾
1	FL	Leon	Calhoun Street Historic District	U.S. 90 and FL 61	Tallahassee	1979-10-24	

Page 1

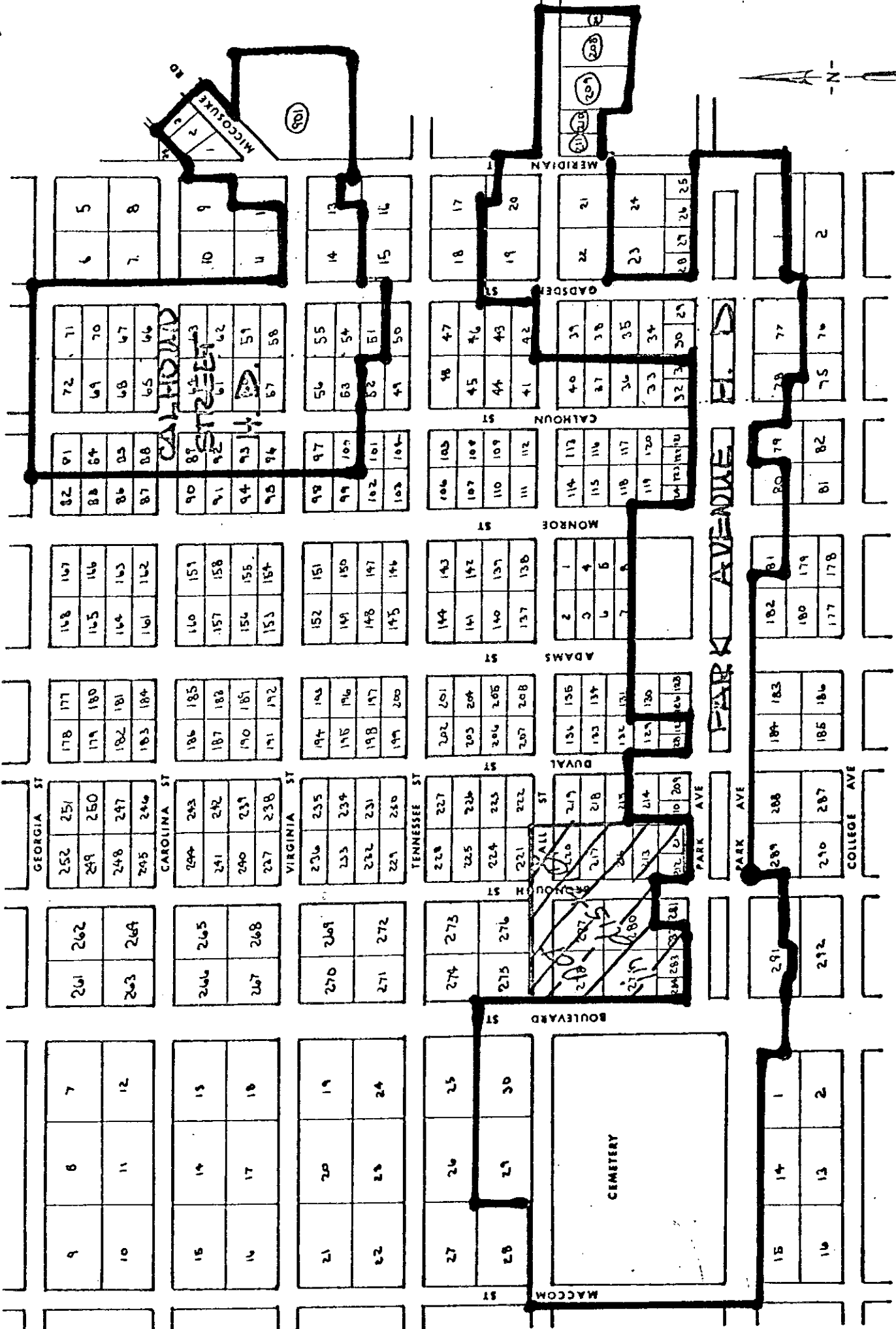


7 SITE IDENTIFICATION CHART (Numbered Sites on Map #1 Correspond to Numbered Items on This List)

<u>Historic Name (Common Name in Parentheses)</u>	<u>Address</u>	<u>Owner</u>	<u>Date of Construction</u>	<u>Condition</u>	<u>Present Use</u>	<u>Present Occupant</u>
1. Residence adapted to commercial use	518 N. Calhoun	Val J. Mason 3200 Robin Hood Rd.	1922	Good	Commercial	Randy Smith Interior Design
2. Gibson Hse. (Sticks N' Stiches)	512 N. Calhoun	John & Marie Morrissey 5512 Touraine St.	1922	Good	Commercial	Sticks N' Stiches Gift Shop
3. Blake Hse. (McMullen Hse.)	525 N. Calhoun	D.F. & E.M. McMullen 316 E. Georgia St.	1895-1900	Good	Residential	Varies
4. Yancey Hse. (Towle Hse. Interiors)	517 N. Calhoun	Lucille S. Givhan Towle House Interiors 517 N. Calhoun	1830-1850	Fair	Commercial	Towle House Interiors
5. Rutgers Hse. (Garden Center)	507 N. Calhoun	Tallahassee Garden Club, Inc. 507 N. Calhoun	c. 1840	Excellent	Garden center/ meeting house	Garden Club
6. Randall Hse.	424 N. Calhoun	C. Van Brunt Lewis 240 DeSota Drive	1835	Poor	Vacant	None
7. Bloxham Hse. (Whitehouse Hotel)	410 N. Calhoun	Joseph D. & M.B. Smith 410 N. Calhoun	c. 1830	Fair	Commercial	Multiple
8. Quarterman Hse.	411 N. Calhoun	Phebe B. Quarterman 411 N. Calhoun	1926	Good	Residential	Phebe B. Quarterman
9. Cobb Hse.	403 N. Calhoun	RoberttSherrill 403NbeCalhounobb 403 N. Calhoun	late 1880's	Poor	Vacant and for sale	None
10. Lee Apts.	314 E. Virginia	John Lee 980 Lake Ellen Drive Crawfordville, Florida	1940	Good	Multiple dwelling	Multiple

SITE IDENTIFICATION CHART (CONT.)

<u>Historic Name (Common Name in Parentheses)</u>	<u>Address</u>	<u>Owner</u>	<u>Date of Construction</u>	<u>Condition</u>	<u>Present Use</u>	<u>Present Occupant</u>
11. Csikos Hse.	316 E. Virginia	Evelyn K. & E. Csikos 316 E. Virginia	1935	Good	Residential	Evelyn K. & E. Csikos
12. Bradford Hse. (Bessie Wells Hse.)	324 E. Virginia	Bessie L. Wells 324 E. Virginia	1900	Fair	Residential	Bessie L. Wells
13. Shine Hse.	318 N. Calhoun	Billy M. & R.F. Murphy 318 N. Calhoun	c. 1906-1909	Fair	Residential	Billy M. & R.F. Murphy
14. Bowen Hse.	325 N. Calhoun	JeanFritchief 325 N. Calhoun	1830-1832	Poor	Vacant	None
15. Markham Hse. (Salvation Army)	317 N. Calhoun	Salvation Army	c. 1900-1904	Excellent	Multi-use facility	Salvation Army
16. Cresap Hse. (Bishop Hse.)	317 E. Virginia	Bishop Investment P.O. Box 3407	1927	Excellent	Commercial	William Bishop, Planning Consultant
17. Residence converted to office building	314 N. Gadsden	Bishop Investment P.O. Box 3407	1940	Good	Commercial	Charles Palazzolo, C.P.A.
18. Perkins Hse. (Darling Hearing Aids)	310 N. Gadsden	Horace C. Sellars P.O. Box 606	c. 1907-1909	Good	Mixed commercial/residential	Darling Hearing Aids/ multiple residents
19. Chesley Hse.	401 E. Virginia	Mrs. Edwin Grosvenor Chesley 401 E. Virginia	1895	Excellent	Residential	Mrs. Edwin Grosvenor Chesley and sister, Mrs. Thompson 401 E. Virginia



82	91	72	71	6	5
83	84	69	70		
86	85	68	67	7	8
87	88	65	66		

148	167
145	146
144	143
161	162

178	177
179	180
182	181
183	184

252	251
249	250
248	247
245	246

261	262
263	264

9	8	7
10	11	12

90	87	74	73	9
91	92	61	62	10
94	93	54	51	11
95	94	57	58	12

140	151
157	158
154	155
153	154

186	185
187	188
190	189
191	192

244	243
241	242
240	239
237	238

266	265
267	268

15	14	13
16	17	18

99	97	56	55	14	13
99	100	63	54		
102	101	52	51	15	16
103	104	49	50		

152	151
149	150
148	147
145	146

194	193
195	196
198	197
199	200

236	235
233	234
232	231
229	230

270	269
271	272

21	20	19
22	23	24

106	103	48	47	18	17
107	104	45	46		
110	109	44	43	19	20
111	112	41	42		

144	143
141	142
140	139
137	138

202	201
203	204
204	205
207	208

228	227
225	226
224	223
221	222

274	273
275	276

27	26	25
28	29	30

114	113	40	39	22	21
115	116	37	38		
118	117	36	35	23	24
119	120	33	34		
123	122	32	31	25	26
124	125	29	30	27	28

2	1
3	4
5	6
7	8

136	135
133	134
132	131
129	130
126	127
125	128

217	218
216	215
213	214
212	211
210	209

281	280
282	283
284	285

15	14	13
16	15	14

180	179	78	77		
181	182				
183	184	81	82	2	

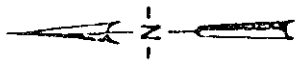
182	181
180	179
177	178

184	183
185	186

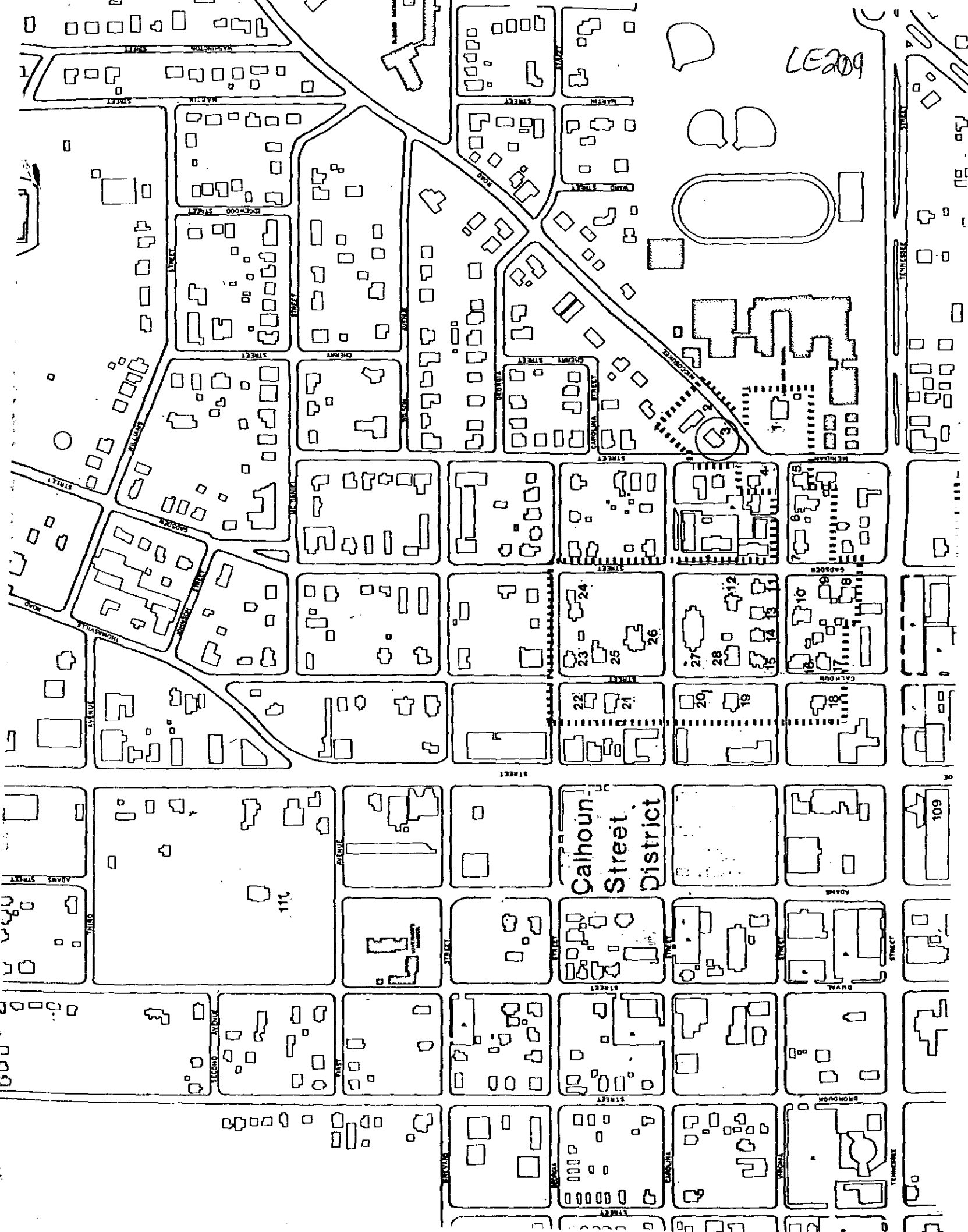
289	288
290	287

291	290
292	291

15	14	13
16	15	14



LE209



Calhoun Street District

109

111

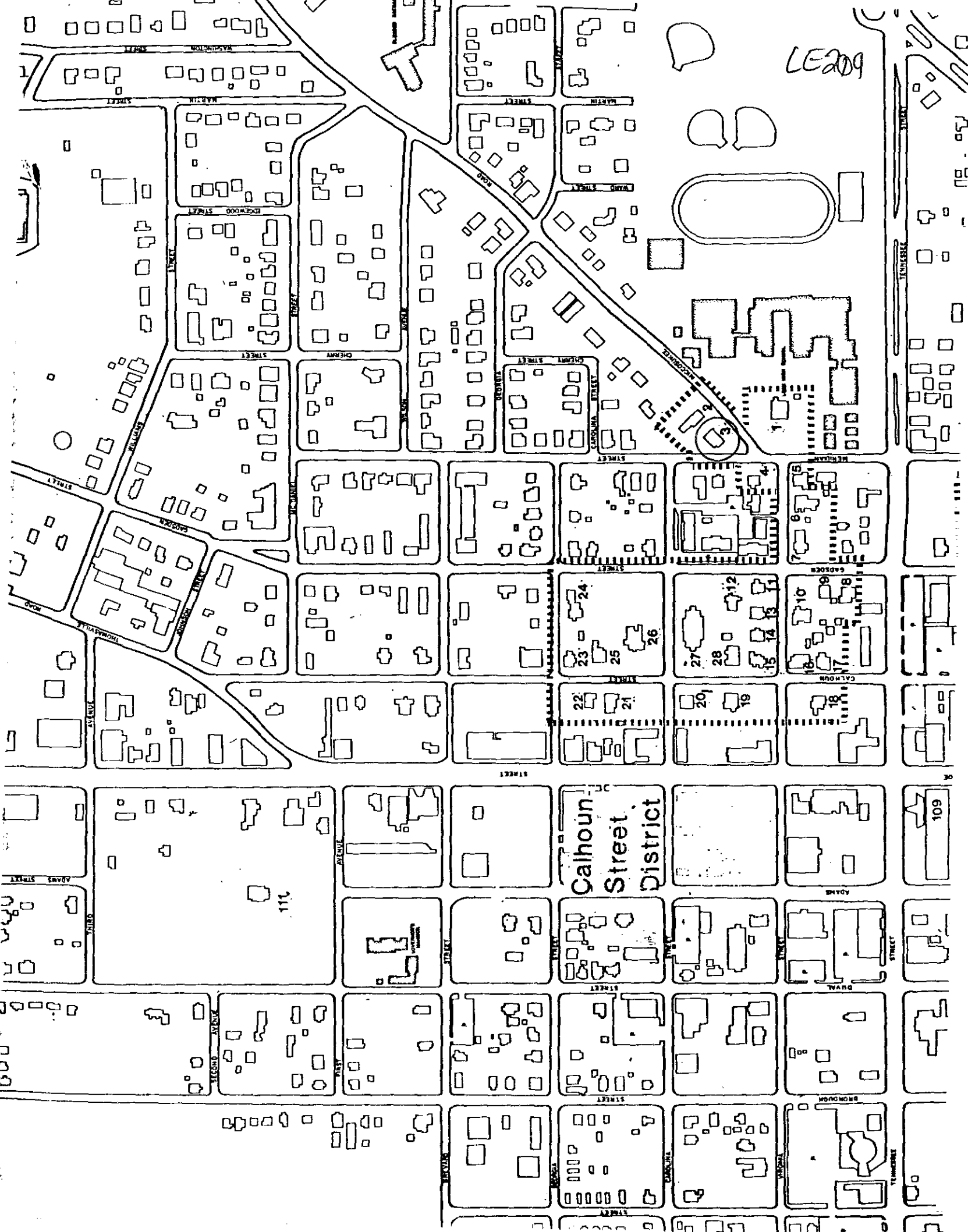
22 21

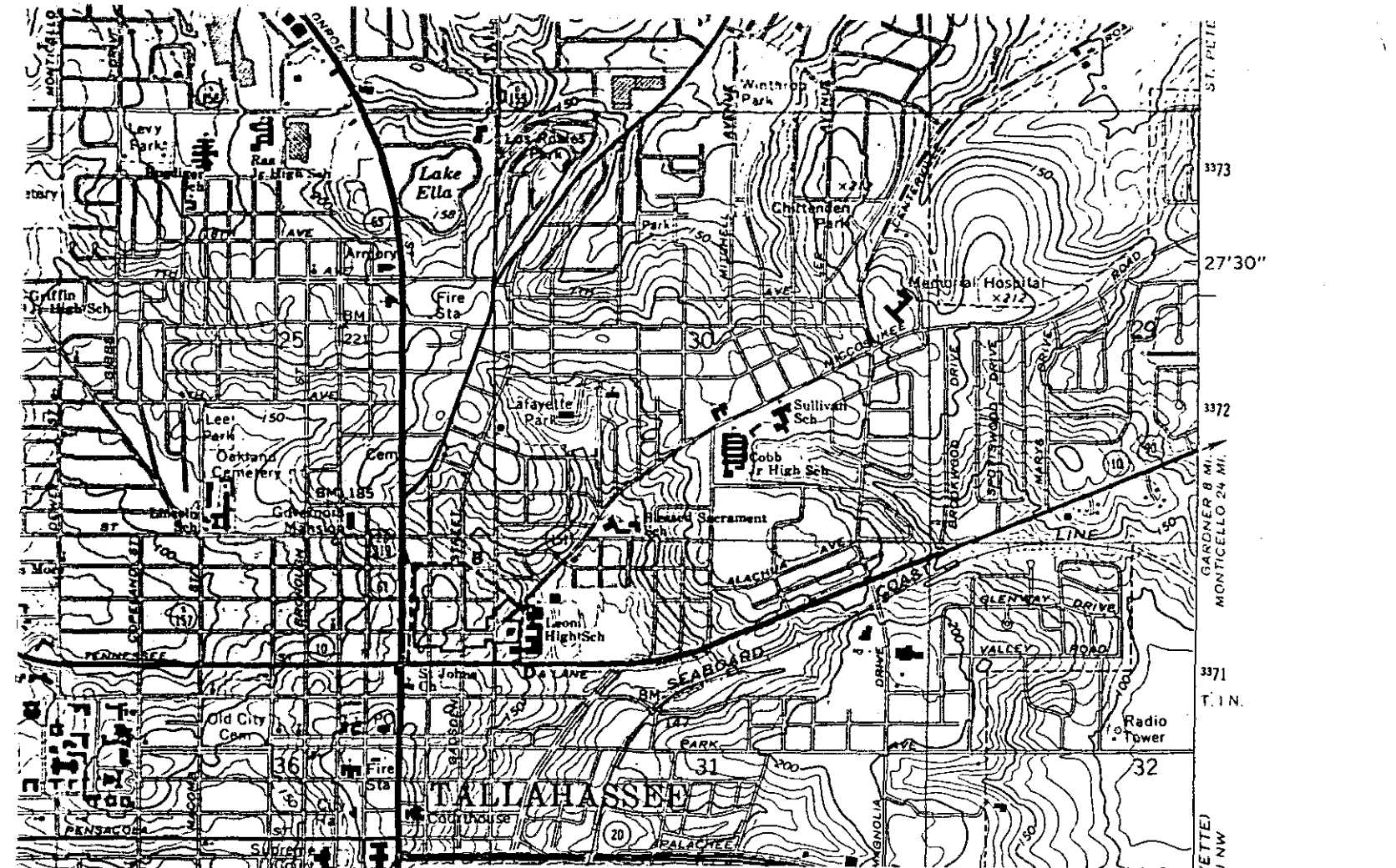
23 24 25 26

27 28 29 30 31 32

33 34 35 36 37 38

39 40 41 42 43 44

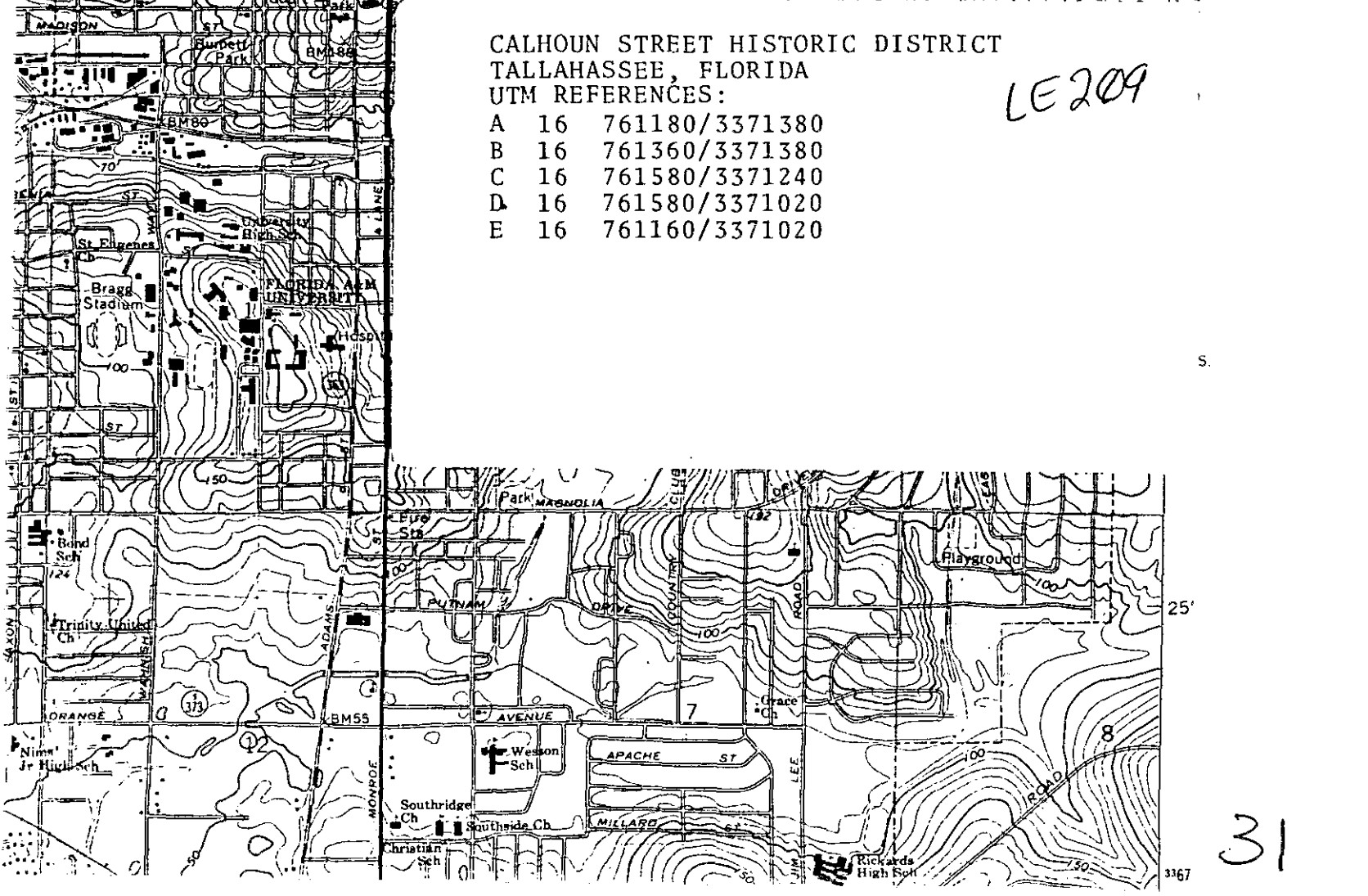




CALHOUN STREET HISTORIC DISTRICT  
 TALLAHASSEE, FLORIDA  
 UTM REFERENCES:

LE209

A	16	761180/3371380
B	16	761360/3371380
C	16	761580/3371240
D	16	761580/3371020
E	16	761160/3371020



31